

## The Benton

"The Benton combines modern craftsman charm with a smart split-foyer layout designed for everyday living and future flexibility."



\*Artist's Rendering – Final appearance may vary\*

### Specifications

Total Heated Sq Ft:	1556 Sq Ft
Bedrooms:	3
Bathrooms:	2
Garage:	446 Sq Ft
Foundation Options:	Crawl/Basement/Slab
Dimensions:	50 Ft x 57 Ft
Stories	2

### Features

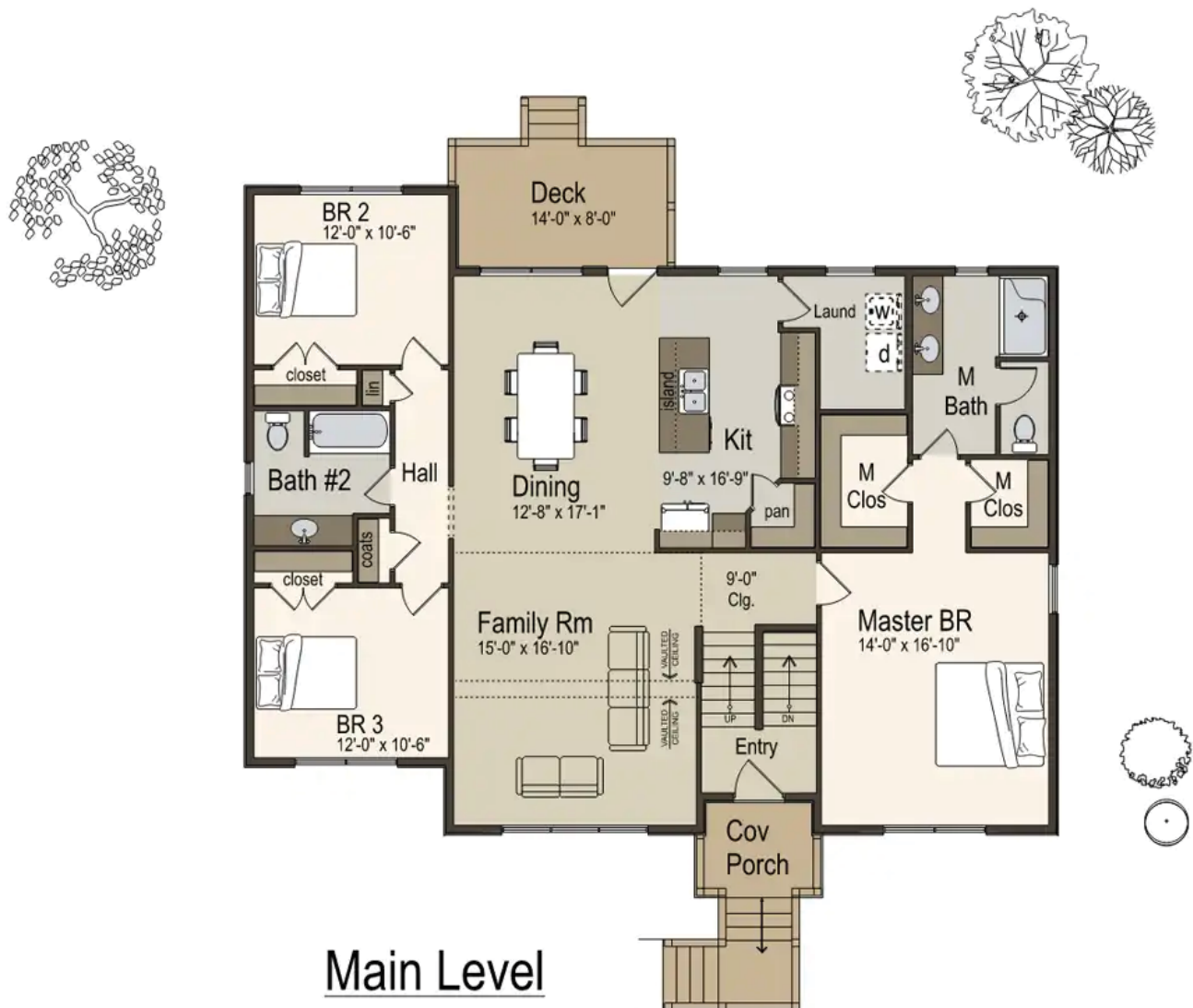
The Benton is a Modern Craftsman Split-Foyer plan that blends style and function with its smart split-bedroom design. The spacious master suite features two walk-in closets, while the vaulted family room flows seamlessly into the open dining and kitchen area—perfect for family dinners, game nights, or entertaining.

On the terrace level, two garage spaces provide plenty of storage or the option to finish for more heated living space. A flexible, welcoming home that adapts to your lifestyle.

# CalLEN

*Custom Homes*

## The Benton - Main Level



## The Benton - Terrace Level

