

CalLEN

Custom Homes

The Telluride

"A ranch plan with room to grow—open, inviting, and designed for modern living."



Artist's Rendering – Final appearance may vary

Specifications

Total Heated Sq Ft:	2869 Sq Ft
Bedrooms:	3
Bathrooms:	3
Garage:	2
Foundation Options:	Crawl/Basement/Slab
Dimensions:	61 Ft x 62 Ft
Stories	2

Features

The Telluride blends craftsman charm with modern flexibility. The main level features an open family room, dining area, and spacious kitchen with island and walk-in pantry.

The master suite offers a private retreat with a large walk-in closet and spa-like bath, while a second bedroom and full bath add convenience.

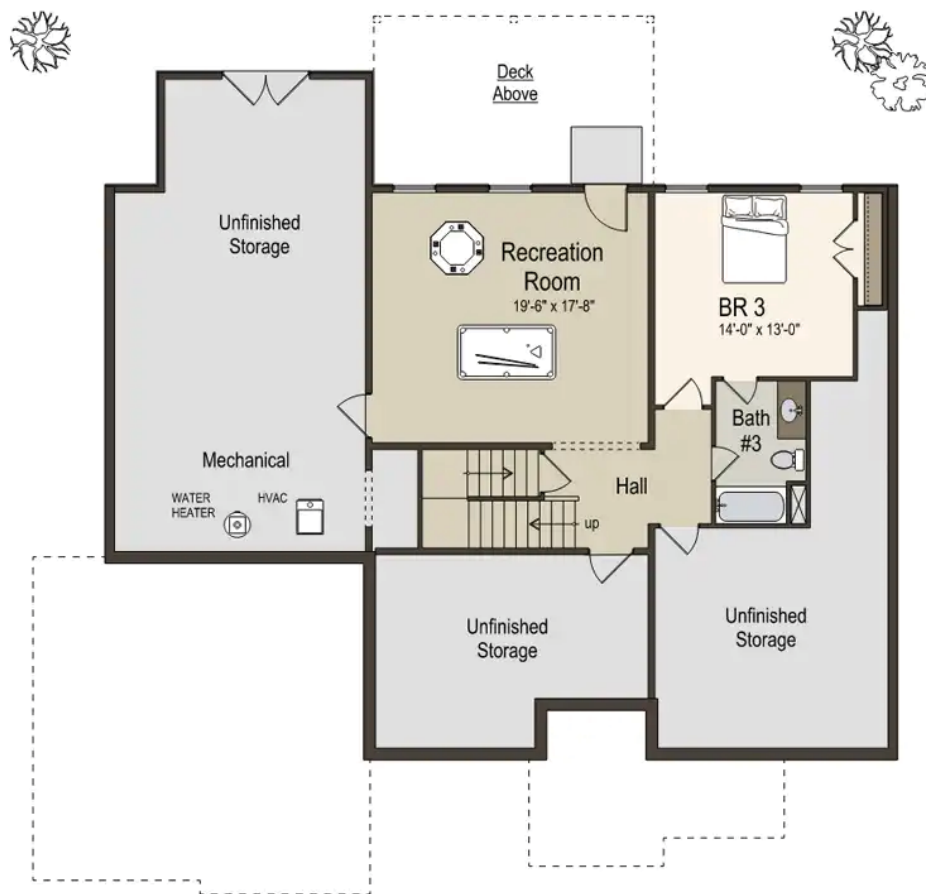
The terrace level expands the living space with a recreation room, guest suite, full bath, and abundant storage—perfect for family living and entertaining.

The Telluride - Main Level



Floor Plan

The Telluride - Terrace Level



Terrace Plan